

VEHICLE TYPE

EURO 2 FE85PE / PG / FE 649 - 659 - FE 859 E
 MITSUBISHI / FE150C1-150E1- FE150E2 CANTER 2.0T /
 WIDE CAB FG145C1 4X4 CANTER 2.5T-FE150W1 3.5T-
 150G1 4T-150G2 4.5T (722 -714) HD 65/72 HYUNDAI

TRANSMISSION TYPE

MO 35 S 5 (5,38-5,52) / MO 35 T3 / 35 S6

Kozmaksan Mitsubishi Power Take OFFs designed for MITSUBISHI trucks. Kozmaksan Mitsubishi PTOs has Single output model, Side Mounting type option and available for UNI&ISO mounting housing or suitable for flange connections.

Applications;

- Garbage Truck
- Crane Truck
- Dump Truck

Vehicle Type MITSUBISHI PNEUMATIC SIDE MOUNTING

Transmission Type MO 35 S 5 (5,38-5,52) / MO 35 T3 / 35 S6

MTS.01.35S5.H

Product Code

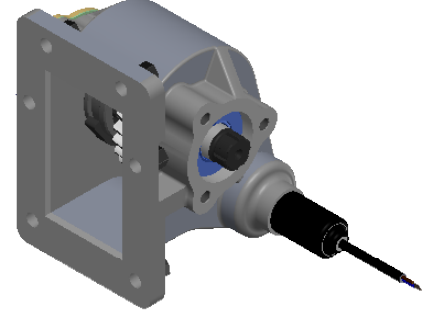
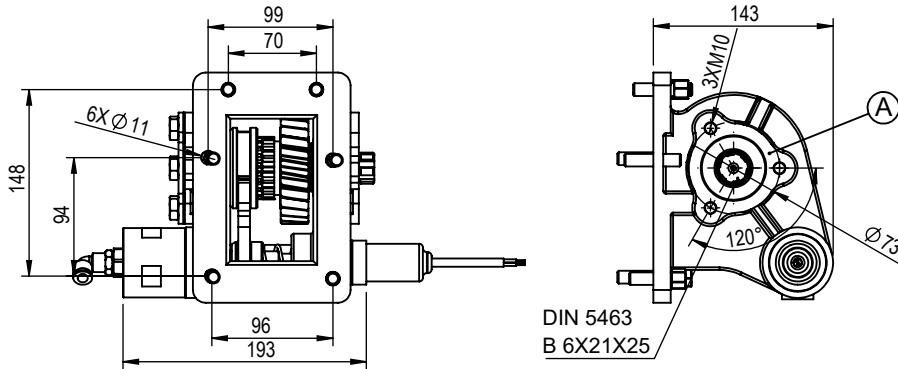
02

15/02/2019

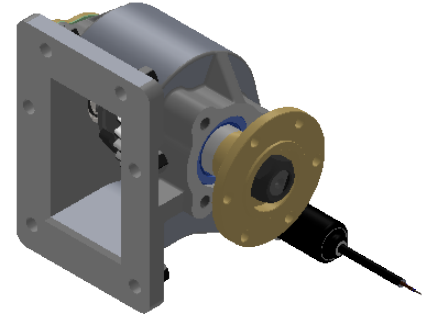
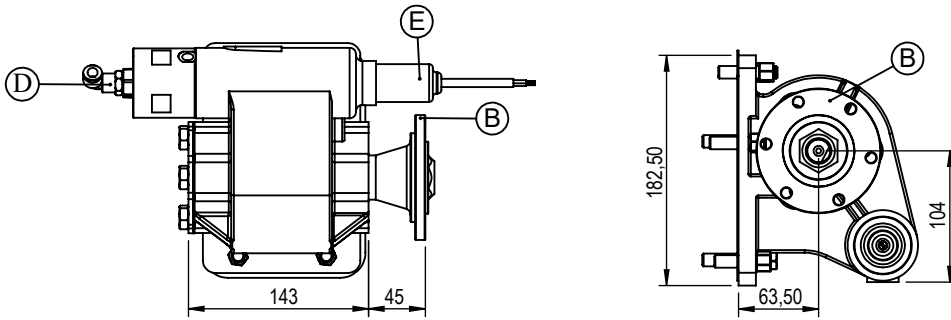
02

Rev. Date

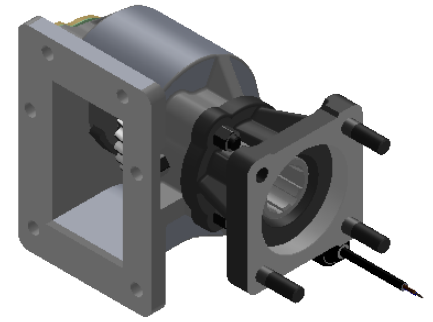
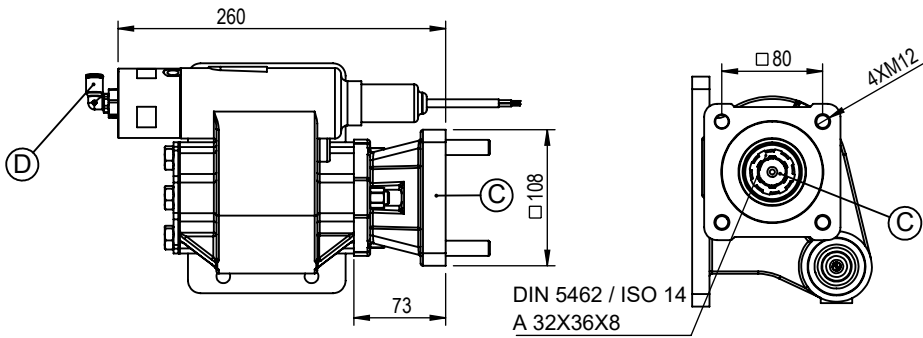
UNI OUTPUT



FLANGE OUTPUT



ISO OUTPUT



A DIN 5463 6X21X25 UNI 3 Delikli Bağlantı Çıkışı

B ISO 7647-7646 Standartlarda Kaplin Çıkışı

C ISO 14 - DIN 5462 8X32X36 Bağlantı Çıkışı

D Hava Girişi R 1/4"

E Devrede-Devrede Değil Müşiri (Opsiyonel)

	UNI Output	FLANGE Output	ISO Output
Power(kW)@1000 RPM	23	36,7	23
Max. Torque (Nm)	220	350	220
Weight (Kg)	6	7	8
Ratio			
Mounting Type	Left Side Mounting		
Sense of Rotation	CW		

- Kozmaksan has all rights to change information in this catalogue without announcing it. This document is representing general information. It is not a contract.
- All information belongs to only PTO/Split Shaft. Do not use PTO/Split Shaft, if it is not suitable for your engine and main transmission.
- Pumps, shafts and other parts should not be longer or heavier than approved distance and weight by the manufacturer of main transmission and engine.

KozmaksanPTO

kozmaksanpto

kozmaksan-hydraulics-pto

KOZANOĞLU
KOZMAKSAN

1.OSB. Erkunt Cad. No: 6 Sincan / ANKARA
Tel.+90 312 267 39 71-Fax +90 312 267 38 72
order@kozmaksan.com.tr
www.kozmaksan.com.tr



Vehicle Type MITSUBISHI MECHANIC SIDE MOUNTING

Transmission Type MO 35 S 5 (5,38-5,52) / MO 35 T3 / 35 S6

MTS.01.35S5.M

Product Code

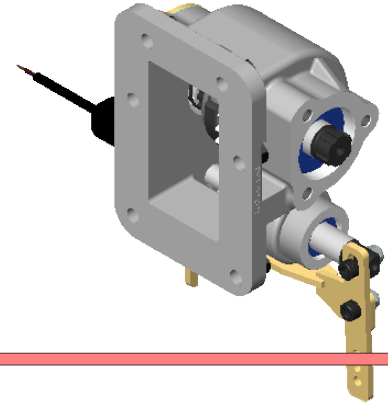
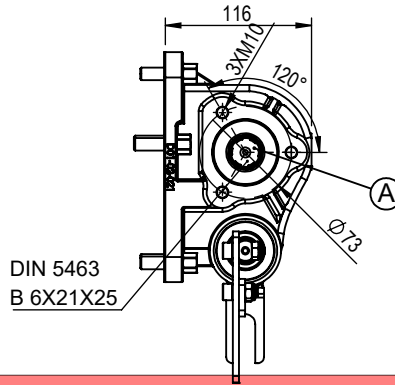
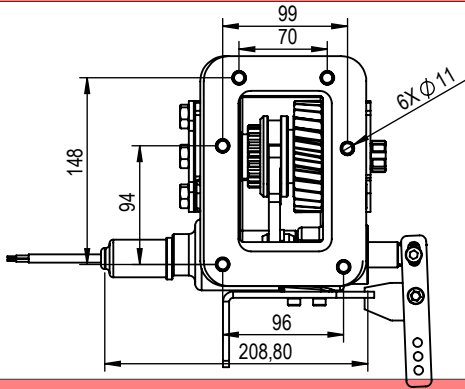
02

27.08.2018

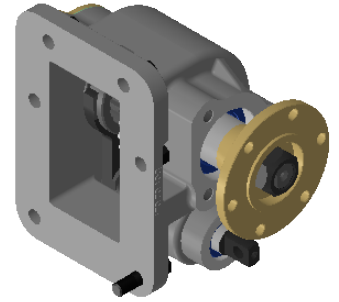
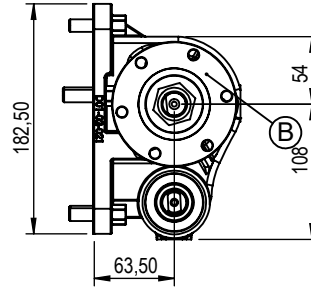
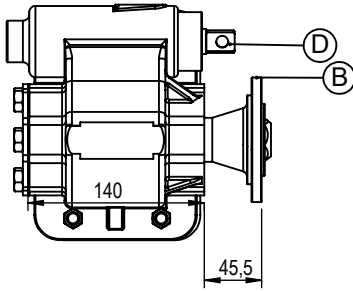
03

Rev. Date

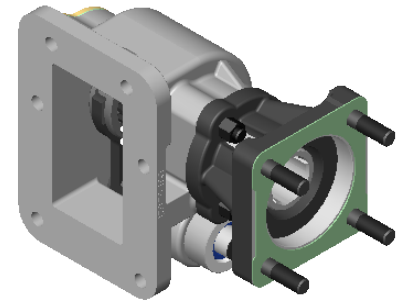
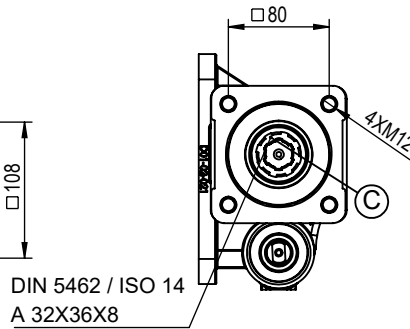
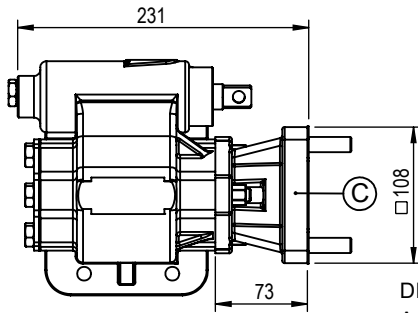
UNI OUTPUT



FLANGE OUTPUT



ISO OUTPUT



A DIN 5463 6X21X25 UNI 3 Delikli Bağlantı Çıkışı

B ISO 7647-7646 Standartlarda Kaplin Çıkışı

C ISO 14 - DIN 5462 8X32X36 Bağlantı Çıkışı

D Mekanik Sistem

	UNI Output	FLANGE Output	ISO Output
Power(kW)@1000 RPM	23	36,7	23
Max. Torque (Nm)	220	350	220
Weight (Kg)	6	7	8
Ratio			
Mounting Type	Left Side Mounting		
Sense of Rotation	CW		

- Kozmaksan has all rights to change information in this catalogue without announcing it. This document is representing general information. It is not a contract.
- All information belongs to only PTO/Split Shaft. Do not use PTO/Split Shaft, if it is not suitable for your engine and main transmission.
- Pumps, shafts and other parts should not be longer or heavier than approved distance and weight by the manufacturer of main transmission and engine.

KozmaksanPTO

kozmaksanpto

kozmaksan-hydraulics-pto

KOZANOĞLU
KOZMAKSAN

1.OSB. Erkunt Cad. No: 6 Sincan / ANKARA
Tel.+90 312 267 39 71-Fax +90 312 267 38 72
order@kozmaksan.com.tr
www.kozmaksan.com.tr



Vehicle Type MITSUBISHI VACUUM CONTROL SIDE MOUNTING

Transmission Type MO 35 S 5 (5,38-5,52) / MO 35 T3 / 35 S6

MTS.01.35S5.V

Product Code

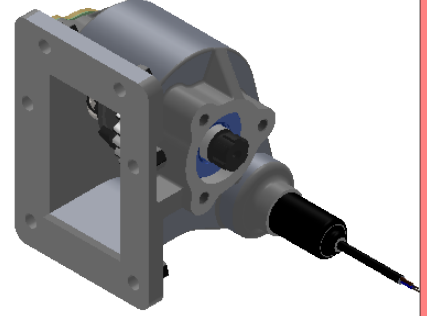
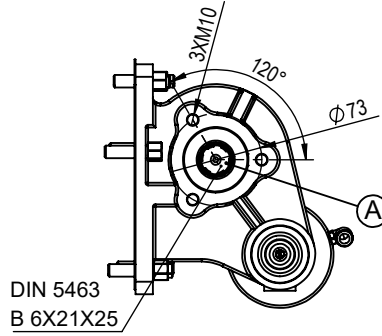
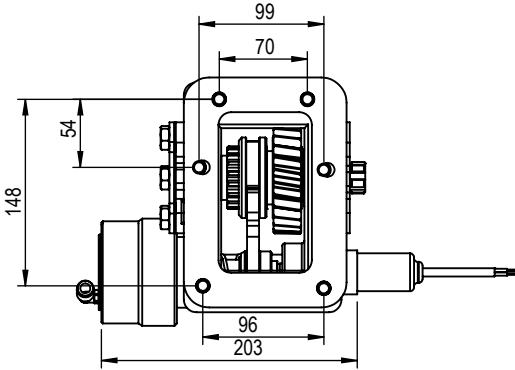
02

15/02/2019

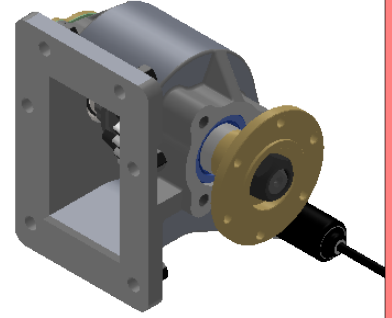
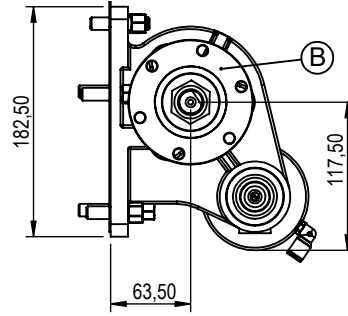
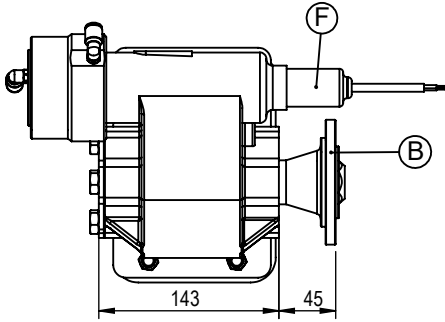
04

Rev. Date

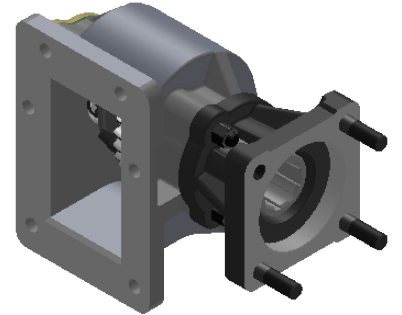
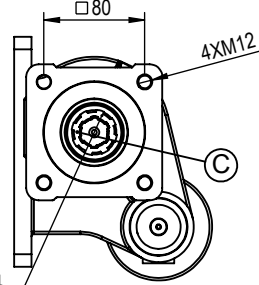
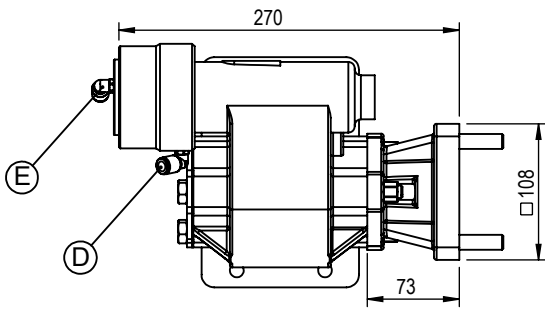
UNI OUTPUT



FLANGE OUTPUT



ISO OUTPUT



A DIN 5463 6X21X25 UNI 3 Delikli Bağlantı Çıkışı

B ISO 7647-7646 Standartlarda Kaplin Çıkışı

C ISO 14 - DIN 5462 8X32X36 Bağlantı Çıkışı

D Vakum Girişi R 1/8"

E Vakum Girişi R 1/8" (Opsiyonel-Çift Tesirli)

F Devrede-Devrede Değil Müşiri (Opsiyonel)

	UNI Output	FLANGE Output	ISO Output
Power(kW)@1000 RPM	23	36,7	23
Max. Torque (Nm)	220	350	220
Weight (Kg)	6	7	8
Ratio			
Mounting Type	Left Side Mounting		
Sense of Rotation	CW		

- Kozmaksan has all rights to change information in this catalogue without announcing it. This document is representing general information. It is not a contract.
- All information belongs to only PTO/Split Shaft. Do not use PTO/Split Shaft, if it is not suitable for your engine and main transmission.
- Pumps, shafts and other parts should not be longer or heavier than approved distance and weight by the manufacturer of main transmission and engine.

KozmaksanPTO

kozmaksanpto

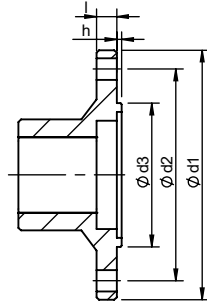
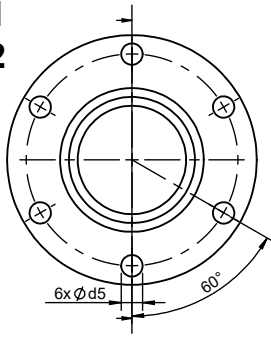
kozmaksan-hydraulics-pt

KOZANOĞLU
KOZMAKSAN

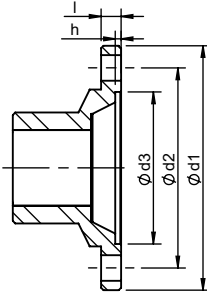
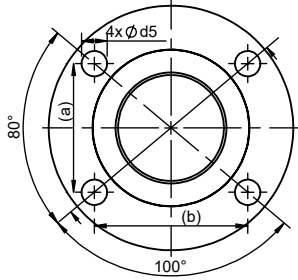
1.OSB. Erkunt Cad. No: 6 Sincan / ANKARA
Tel.+90 312 267 39 71-Fax +90 312 267 38 72
order@kozmaksan.com.tr
www.kozmaksan.com.tr



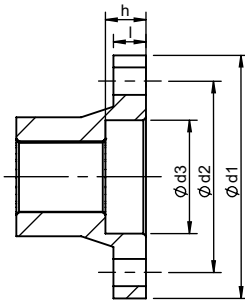
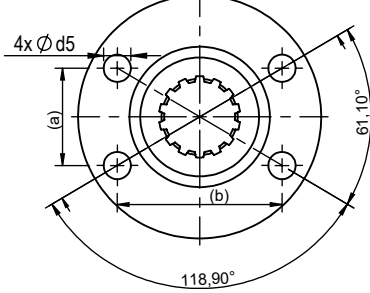
1.1
1.2



1.3



1.4



	Ø d1	Ø d2	Ø d3	Ø d5	l	h	Hole	(a) x (b)
1.1	100	84	57	8,1	8	2,3	6	-
1.2	90	74,5	47	8,1	8	2,3	6	-
1.3	97	79,37	60,32	10,1	8	2,3	4	51 x 60,8
1.4	90	70,83	42	10,1	12	9	4	36 x 61

Dimension are mm.

(PTO Mounting Set)

5



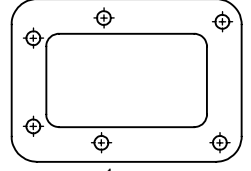
6 pcs

6



6 pcs

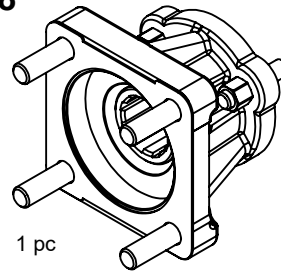
7



1 pc.

ISO Adapter

8



1 pc

UNI Pump Mounting Set

5



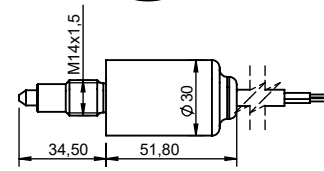
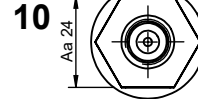
3 pcs

6

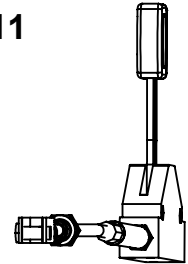


3 pcs

9



11



No	Code	Description	No	Code	Description
1.1	C06-083-2	ISO 7646-100x6x8	9	T12-037	Normally Open
1.2	C06-083-3	ISO 7646-90x6x8	10	T12-036	Normally Closed
1.3	C06-083-1	ISO 7647-SAE 1300x4x10	11	KTP50-55.3500	3.5 MT Control Cable and Lever
1.4	C06-185	Ø90 Flange			
5	T07-004	M10x1,5x45 mm Stud			
6	T08-001	M10x1,5 Nut			
7	T04-023	Gasket 1 mm			
8	AKP.PP.2.52	ISO Adapter			

- Kozmaksan has all rights to change information in this catalogue without announcing it. This document is representing general information. It is not a contract.
- All information belongs to only PTO/Split Shaft. Do not use PTO/Split Shaft, if it is not suitable for your engine and main transmission.
- Pumps, shafts and other parts should not be longer or heavier than approved distance and weight by the manufacturer of main transmission and engine.

KozmaksanPTO

kozmaksanpto

kozmaksan-hydraulics-pt