

VEHICLE TYPE

NKR 2.8 ISUZU LOW / NKR 55 LOW / NHR 55E / Carrier 250T / ISUZU FSR/LM 524 / NKR55E2 / NKR55L / BJ1049

TRANSMISSION TYPE

MSB - 5S / MSB - 5M / MSB - 5G / MOA 89 / MSB - 5R / MSB - 5N / MSB - 5P / JC521T5H / LC5T88 (5,016-5,037-5, 016-5,594)

Kozmaksan Isuzu Power Take OFFs designed for Isuzu trucks. Kozmaksan Isuzu PTOs has Single output model, Side Mounting type option and available for UNI&ISO mounting housing or suitable for flange connections.

Applications;

- Garbage Truck
- Crane Truck
- Dump Truck

Vehicle Type

ISUZU

PNEUMATIC

SIDE MOUNTING

Transmission Type

MSB - 5S / MSB - 5M / MSB - 5G / MOA 89 / MSB - 5R / MSB - 5N / MSB - 5P / JC521T5H / LC5T88 (5,016-5,037-5,016-5,594)

ISZ.06.MSB5S.H

Product Code

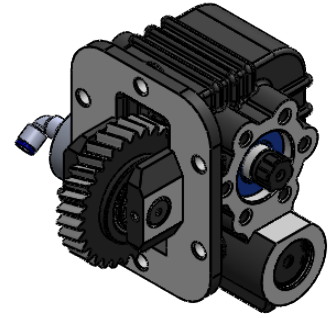
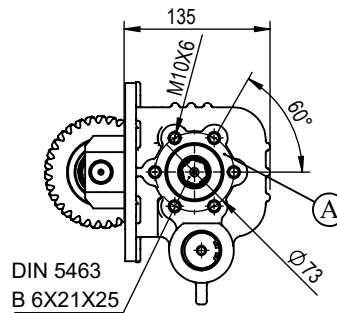
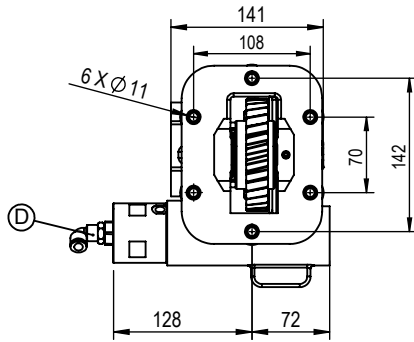
02

14/02/2019

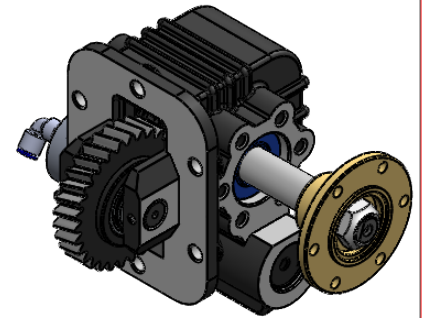
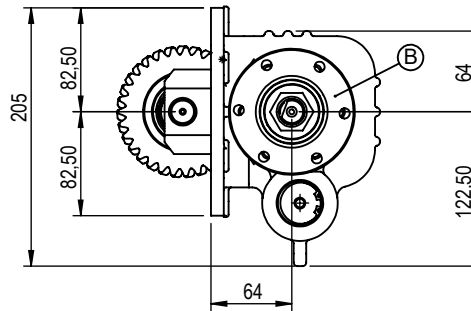
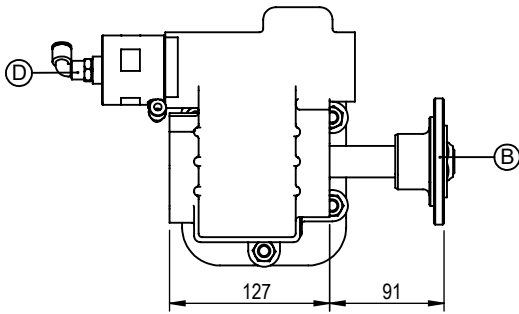
02

Rev. Date

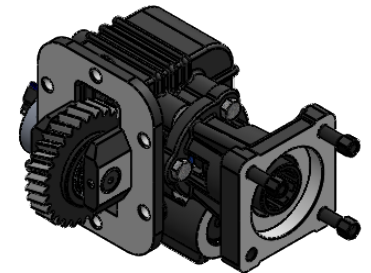
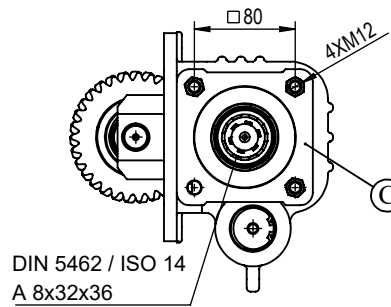
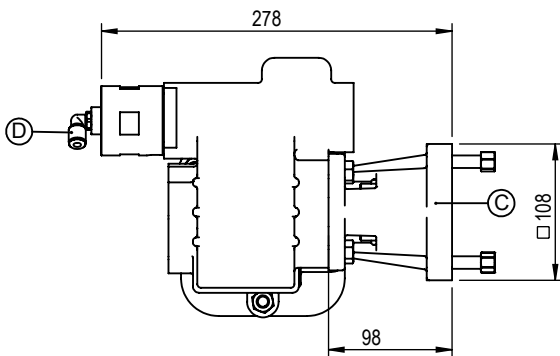
UNI OUTPUT



FLANGE OUTPUT



ISO OUTPUT



A DIN 5463 6X21X25 UNI 3 Bolts Output

B ISO 7647-7646 Standard Flange Output

C ISO 14 - DIN 5462 8X32X36 Output

D Air Inlet R 1/4"

	UNI Output	FLANGE Output	ISO Output
Power(kW)@1000 RPM	23	36,7	23
Max. Torque (Nm)	220	350	220
Weight (Kg)	13	14	15
Ratio	1/1.35		
Mounting Type	Left Side Mounting		
Sense of Rotation	CW		

- Kozmaksan has all rights to change information in this catalogue without announcing it. This document is representing general information. It is not a contract.
 - All information belongs to only PTO/Split Shaft. Do not use PTO/Split Shaft, if it is not suitable for your engine and main transmission.
 - Pumps, shafts and other parts should not be longer or heavier than approved distance and weight by the manufacturer of main transmission and engine.

KozmaksanPTO

kozmaksanpto

kozmaksan-hydraulics-pt

KOZANOĞLU
KOZMAKSAN

1.OSB. Erkunt Cad. No: 6 Sincan / ANKARA
 Tel.+90 312 267 39 71-Fax +90 312 267 38 72
 order@kozmaksan.com.tr
 www.kozmaksan.com.tr



Vehicle Type

ISUZU

MECHANIC

SIDE MOUNTING

Transmission Type

MSB - 5S / MSB - 5M / MSB - 5G / MOA 89 / MSB - 5R / MSB - 5N / MSB - 5P / JC521T5H / LC5T88 (5,016-5,037-5,016-5,594)

ISZ.06.MSB5S.M

Product Code

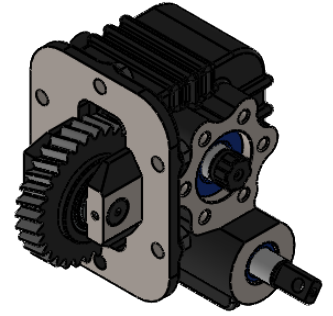
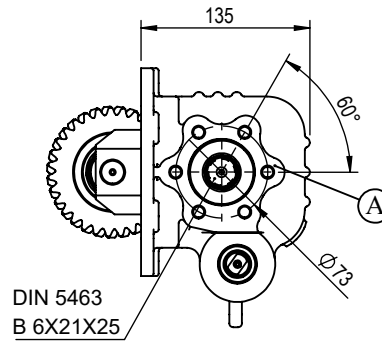
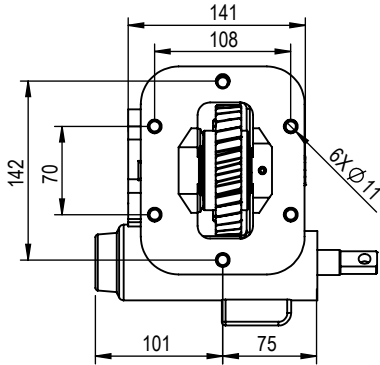
02

14/02/2019

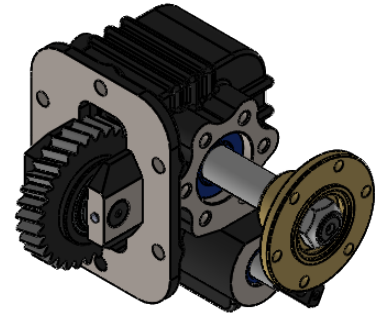
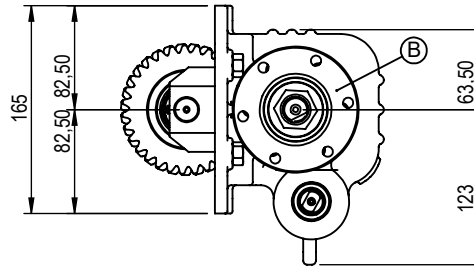
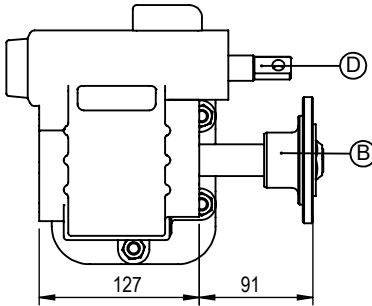
03

Rev. Date

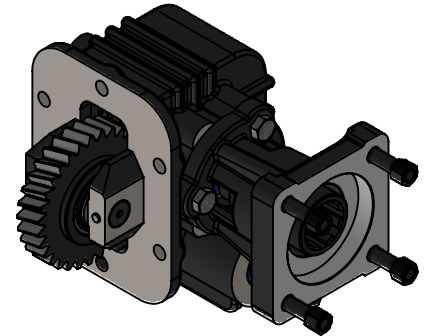
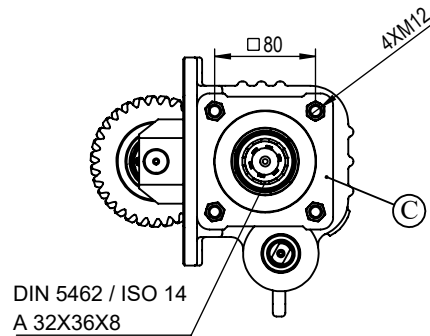
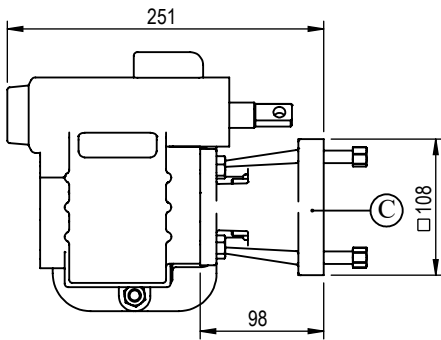
UNI OUTPUT



FLANGE OUTPUT



ISO OUTPUT

**A** DIN 5463 6X21X25 UNI 3 Bolts Output**B** ISO 7647-7646 Standard Flange Output**C** ISO 14 - DIN 5462 8X32X36 Output**D** Mechanic System

	UNI Output	FLANGE Output	ISO Output
Power(kW)@1000 RPM	23	36,7	23
Max. Torque (Nm)	220	350	220
Weight (Kg)	13	14	15
Ratio	1/1.35		
Mounting Type	Left Side Mounting		
Sense of Rotation	CW		

- Kozmaksan has all rights to change information in this catalogue without announcing it. This document is representing general information. It is not a contract.
 - All information belongs to only PTO/Split Shaft. Do not use PTO/Split Shaft, if it is not suitable for your engine and main transmission.
 - Pumps, shafts and other parts should not be longer or heavier than approved distance and weight by the manufacturer of main transmission and engine.

KozmaksanPTO

kozmaksanpto

kozmaksan-hydraulics-pto

Vehicle Type

ISUZU

VACUUM CONTROL

SIDE MOUNTING

Transmission Type

MSB - 5S / MSB - 5M / MSB - 5G / MOA 89 / MSB - 5R / MSB - 5N / MSB - 5P / JC521T5H / LC5T88 (5,016-5,037-5,016-5,594)

ISZ.06.MSB5S.V

Product Code

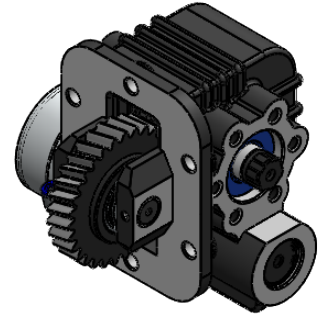
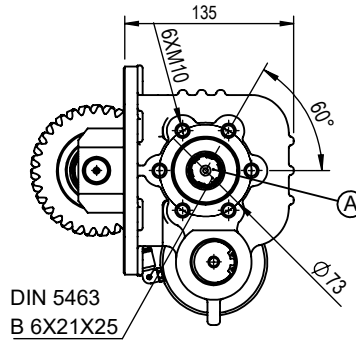
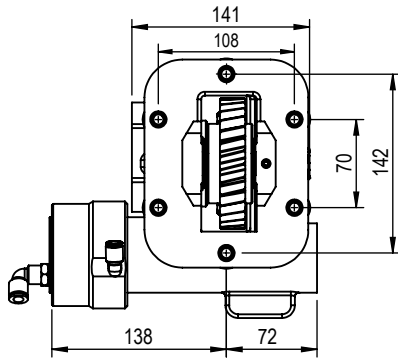
02

14/02/2019

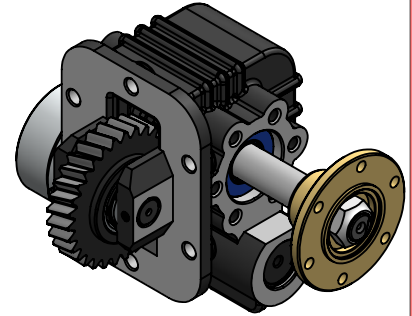
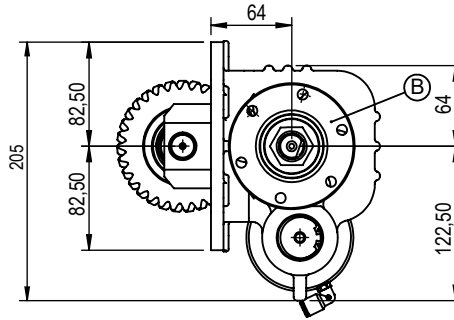
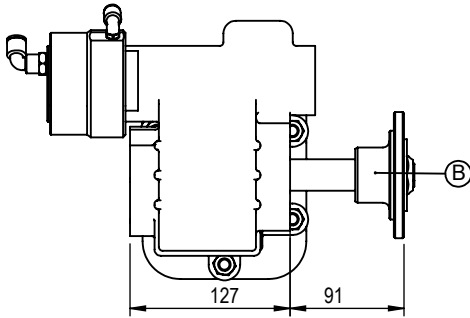
04

Rev. Date

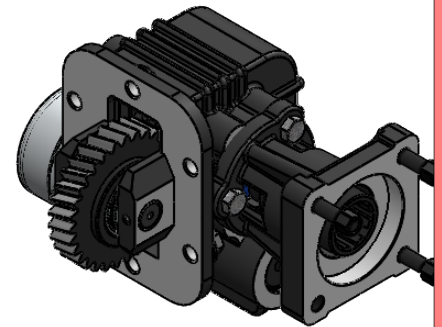
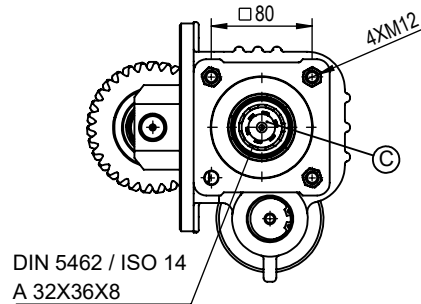
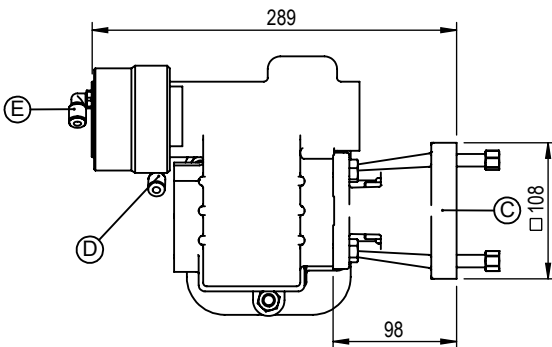
UNI OUTPUT



FLANGE OUTPUT



ISO OUTPUT



A DIN 5463 6X21X25 UNI 3 Bolts Output

B ISO 7647-7646 Standard Flange Output

C ISO 14 - DIN 5462 8X32X36 Output

D Vacuum Inlet R 1/8"

E Vacuum Inlet R 1/8" (Opt.)

	UNI Output	FLANGE Output	ISO Output
Power(kW)@1000 RPM	23	36,7	23
Max. Torque (Nm)	220	350	220
Weight (Kg)	13	14	15
Ratio	1/1.35		
Mounting Type	Left Side Mounting		
Sense of Rotation	CW		

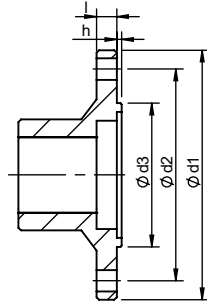
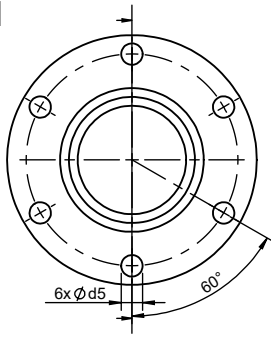
- Kozmaksan has all rights to change information in this catalogue without announcing it. This document is representing general information. It is not a contract.
 - All information belongs to only PTO/Split Shaft. Do not use PTO/Split Shaft, if it is not suitable for your engine and main transmission.
 - Pumps, shafts and other parts should not be longer or heavier than approved distance and weight by the manufacturer of main transmission and engine.

KozmaksanPTO

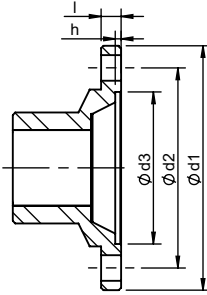
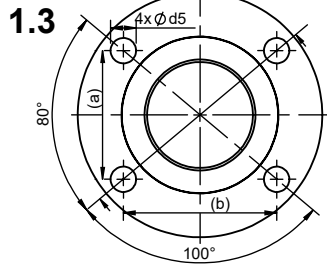
kozmaksanpto

kozmaksan-hydraulics-pt

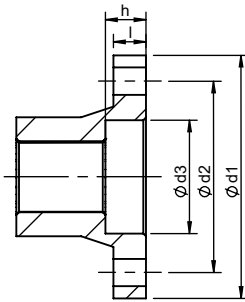
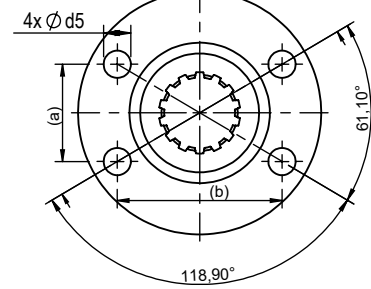
1.1



1.2



1.4



	Ø d1	Ø d2	Ø d3	Ø d5	l	h	Hole	(a) x (b)
1.1	100	84	57	8,1	8	2,3	6	-
1.2	87	69,85	57,1	8,1	8	2,3	4	-
1.3	97	79,37	60,32	10,1	8	2,3	4	51 x 60,8
1.4	90	70,83	42	10,1	12	9	4	36 x 61

All dimensions are mm.

(PTO Mounting Parts)

5



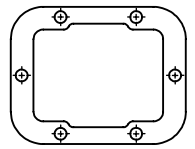
6 pcs

6



6 pcs

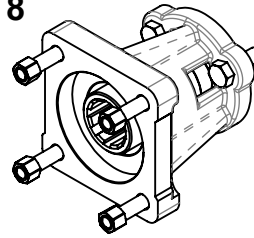
7



1 pcs

ISO Adapter

8



UNI Pump Mounting Parts

5



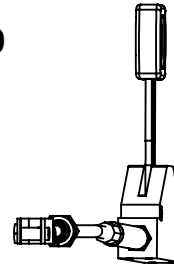
3 pcs

6



3 pcs

9



No	Code	Description	No	Code	Description
1.1	C06-079	ISO 7646-100x6x8 Flange	9	KTP50-55.3500	3,5 mt Control Cable and Lever
1.2	C06-110	ISO 7647 - 100X4 Flange			
1.3	C06-083	ISO 7647-SAE 1300x4x10 Flange			
1.4	C06-184	Ø90 Flange			
5	T07-049	M10X45X1,25 mm Stud			
6	T08-030	M10X1.25 Nut			
7	T04-021	Gasket			
8	AKP.PP.1	ISO Adapter			

- Kozmaksan has all rights to change information in this catalogue without announcing it. This document is representing general information. It is not a contract.
 - All information belongs to only PTO/Split Shaft. Do not use PTO/Split Shaft, if it is not suitable for your engine and main transmission.
 - Pumps, shafts and other parts should not be longer or heavier than approved distance and weight by the manufacturer of main transmission and engine.

KozmaksanPTO

kozmaksanpto

kozmaksan-hydraulics-pt