



VEHICLE TYPE

214.26-220.26-280 FATİH / 2520L-2621 FORD CARGO / 522-822-620 BMC 280 / FODEN 300026.234-26.264-26.284 MAN 6X2 EURO / SEDDON 211 / NISSAN CPC 16 / RENAULT MIDLUM 270 / TATA LPTA 1621 TC 6x6-LPS 4021 TC / ERF ES6 / 1626 JAC MISIR / AMW INDIA 4930-4018-2518 / ISUZU FXZ 23 / HINO FM1JNRA-JNPD-JKPA-GVW 26T / MITSUBISHI M527M2L / 527M3L / FN 627 / NISSAN UD177ETN-CWA211MHR-CWA214-CPC16 / HINO 500 SERIES GH1JLPD EURO 2 / 18.264 MAN Mitsubishi Fighter-280-FU281U8 / Fighter-280-FN281U8 / Fighter-280-FM280H8 / Fighter-FM281M8

TRANSMISSION TYPE

EATON FS/FSV/FSO/H/V 6109(6,59-8,81-12,64)-6209-8209(8,76-12,57)
FS/FSV/FSO/H/V 5109-6309-8309 (7,84-6,59-8,76-9,45-12,637) A
EATON ES 11109 DD (8,81) - ES 11109 LH
ESO 14409
EATON ESO 14409 FORD 2018

Kozmaksan Eaton-Fuller Power Take OFFs designed for Eaton-Fuller series main transmissions. Kozmaksan EAT-FUL PTOs has Single&Double output models, Rear&Side Mounting type options and available for UNI&ISO mounting housing or suitable for flange connections.

Applications;

- Garbage Truck
- Crane Truck
- Dump Truck

PNEUMATIC

REAR MOUNTING

EAT.3.0909

Product Code

Transmission
TypeEATON FS/FSV/FSO/H/V 6109(6,59-8,81-12,64)-
6209-8209(8,76-12,57) / FS/FSV/FSO/H/V 5109-6309-8309
(7,84-6,59-8,76-9,45-12,637) A / EATON ES 11109 DD (8,81)

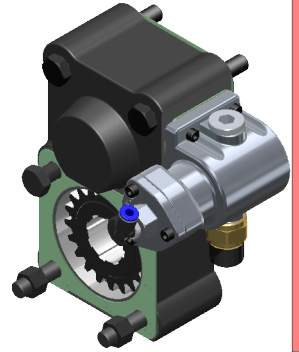
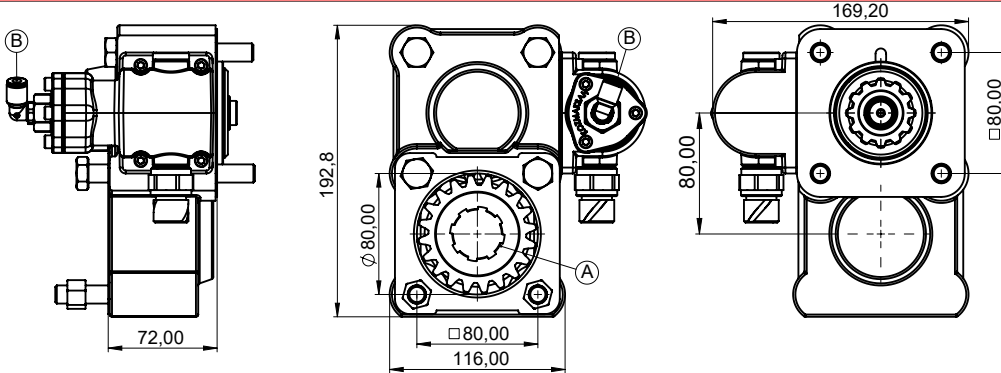
01

08.02.2019

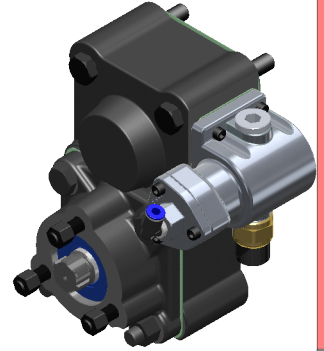
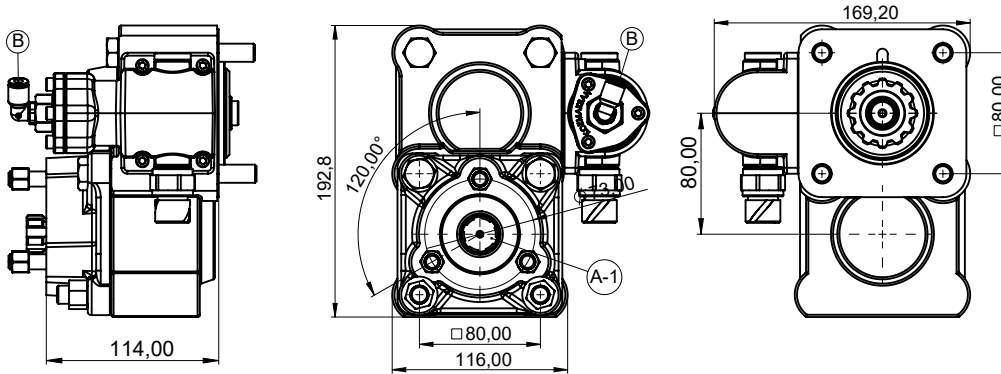
2/4

Rev. Date

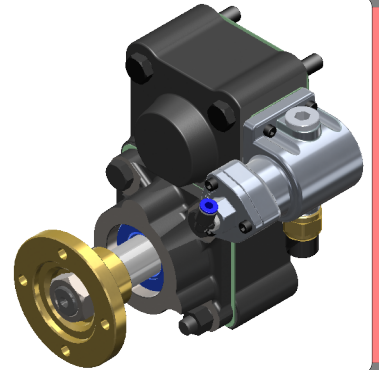
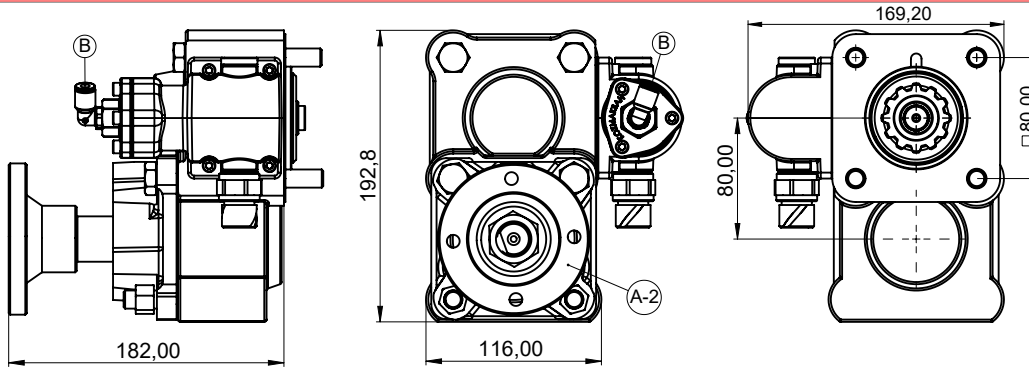
ISO OUTPUT



UNI OUTPUT



FLANGE OUTPUT

**A** Output - DIN 5462 / 32x36x8 / ISO 14 4 Bolts**B** Air Inlet**A-1** Output - DIN 5463 / 6x21x25 / UNI 3 Bolts**A-2** Output - ISO 7647-7646 Standard Flange

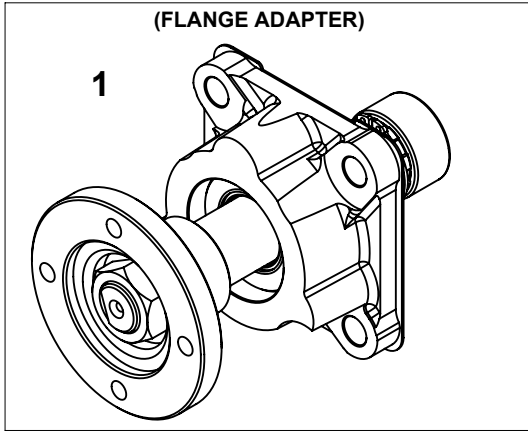
	ISO Output	UNI Output	FLANGE Output
Power(kW)@1000 RPM	34,5	23	34,5
Max. Torque (Nm)	330	220	330
Weight (Kg)	8,5	11,5	14
Ratio	1/1.2		
Mounting Type	Rear Mounting		
Sense of Rotation	CCW		

- Kozmaksan has all rights to change information in this catalogue without announcing it. This document is representing general information. It is not a contract.
- All information belongs to only PTO/Split Shaft. Do not use PTO/Split Shaft, if it is not suitable for your engine and main transmission.
- Pumps, shafts and other parts should not be longer or heavier than approved distance and weight by the manufacturer of main transmission and engine.

KozmaksanPTO

kozmaksanpto

kozmaksan-hydraulics-pt



EAT.3.0909

Product Code

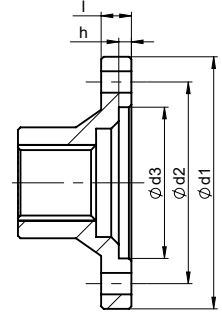
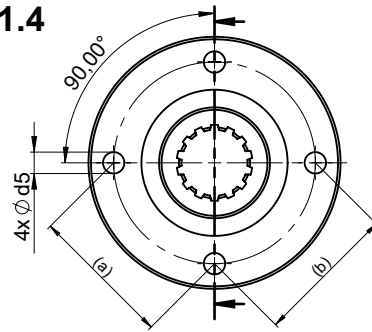
01

08.02.2019

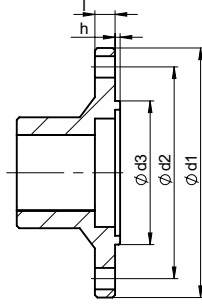
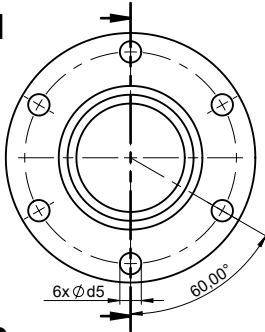
3/4

Rev. Date

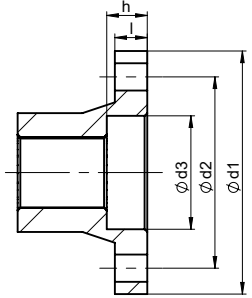
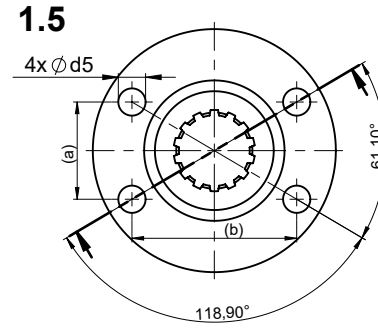
1.4



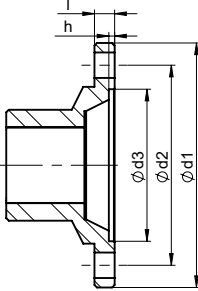
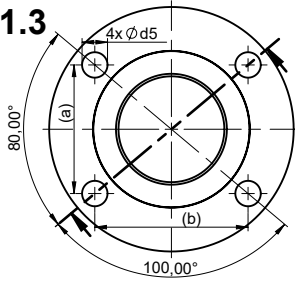
1.1



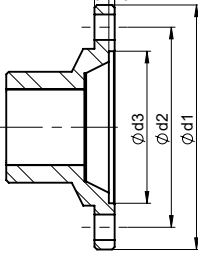
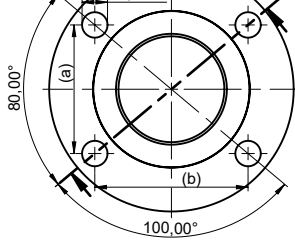
1.5



1.2



1.3



	Ød1	Ød2	Ød3	Ød5	l	h	Hole	(a) x (b)
1.1	100	84	57	8,1	8	2,3	6	-
1.2	97	79,37	60,32	10,1	8	2,3	4	51 x 60,8
1.3	87	69,85	57,10	8,1	2	2	4	45 x 53,5
1.4	100	80	60	8,5	12	5	4	56,5 x 56,5
1.5	90	70,83	42	10,1	12	15	4	36 x 61

All dimensions are mm.

No	Code	Description			
1	KIT.55.03.UF	Flange Adapter			
1.1	C06-076	ISO 7646-100x6x8			
1.2	C06-045	ISO 7647-SAE 1300x4x10			
1.3	C06-082	ISO 7647 - SAE 1100x4x8			
1.4	C06-194	Ø100 Flange			
1.5	C06-192	Ø90 Flange			

- Kozmaksan has all rights to change information in this catalogue without announcing it. This document is representing general information. It is not a contract.
 - All information belongs to only PTO/Split Shaft. Do not use PTO/Split Shaft, if it is not suitable for your engine and main transmission.
 - Pumps, shafts and other parts should not be longer or heavier than approved distance and weight by the manufacturer of main transmission and engine.

KozmaksanPTO



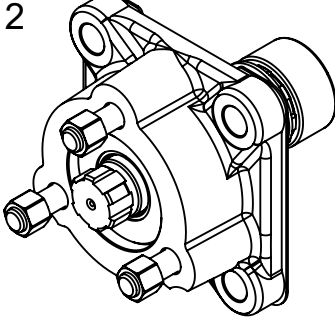
kozmaksanpto



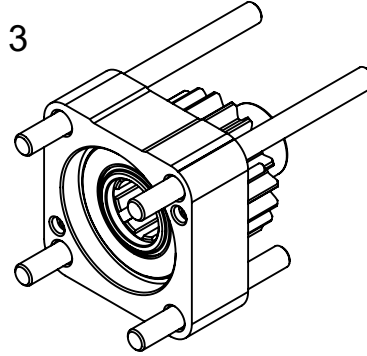
kozmaksan-hydraulics-pt



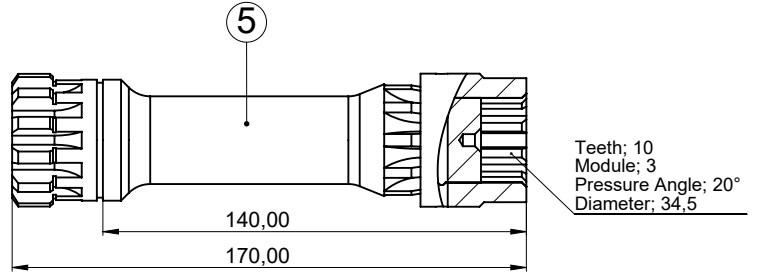
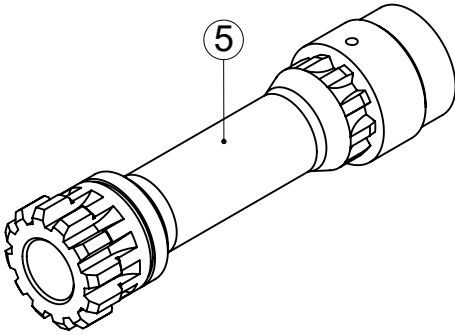
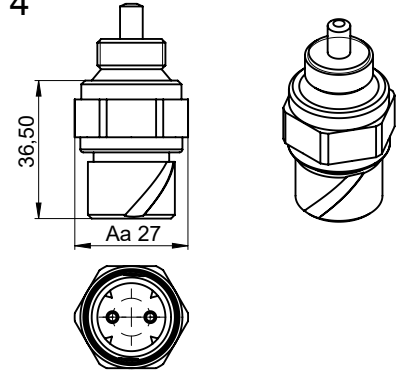
(UNI Output Adapter)



(ISO Extension Kit)



4



No	Code	Description			
2	KIT.52.02.KF	UNI Adapter			
3	KIT.1.ISO	ISO Extension Kit			
4	T12-001	Engage/Disengage Sensor			
5	KML-0909DS	PTO Shaft			

- Kozmaksan has all rights to change information in this catalogue without announcing it. This document is representing general information. It is not a contract.
- All information belongs to only PTO/Split Shaft. Do not use PTO/Split Shaft, if it is not suitable for your engine and main transmission.
- Pumps, shafts and other parts should not be longer or heavier than approved distance and weight by the manufacturer of main transmission and engine.

KozmaksanPTO



kozmaksanpto



kozmaksan-hydraulics-pto

